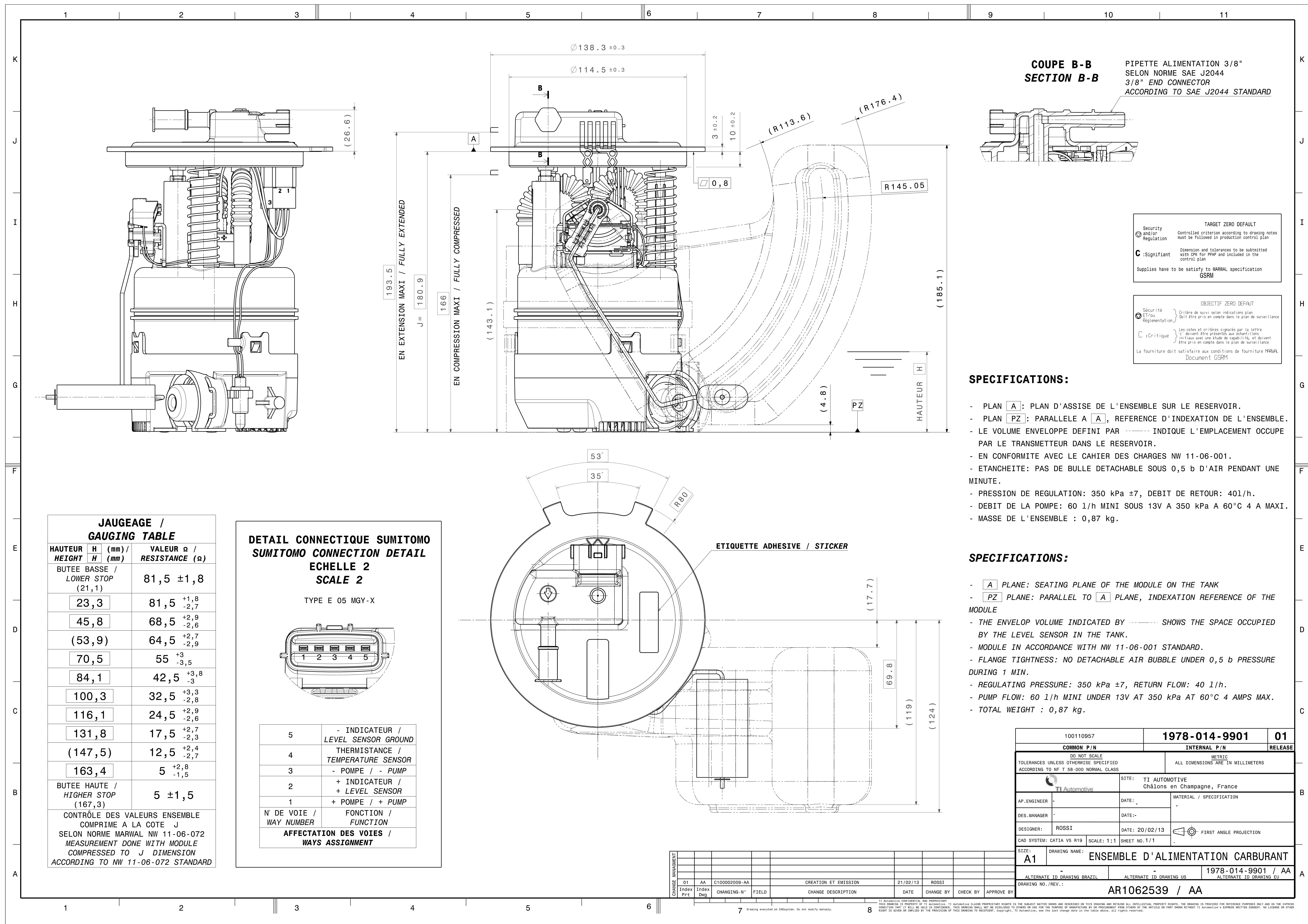



REVISIONS						
ZONE	LTR	DESCRIPTION	CHANGE No	DATE	BY	APPR'D
	AA	INITIAL RELEASE	DR38626	28OCT13	SLK	JMB




METRIC
ALL DIMENSIONS ARE IN MILLIMETERS

DO NOT SCALE

DECIMAL TOLERANCES UNLESS OTHERWISE SPECIFIED:
ONE PLACE ± 0.25 TWO PLACE ± 0.13 ANGLES $\pm 1^\circ$

 **THIRD ANGLE PROJECTION**

DIMENSIONS IN ACCORDANCE WITH ASME Y14.5 - 2009

**TI Automotive**

630 COLUMBIA LA ST.
CARO, MI 48723
1 989.673.7727

ENGINEER: J.BARRONS	280C13	MATERIAL/SPECIFICATION:
DES. MANAGER:		
DESIGNER: S.KROY	280C13	
CAD SYSTEM: PROE	SCALE: N/A	SHEET NO. 1 OF 1
REFERENCE: DTD:		P/W REFERENCE: 100115387AA
REF: PROD: 100110957AA		REF: 100115387AA
REF: DESK: 1001062539/AA		P/W REFERENCE: 2D: ARO035922/AA
DRAWN BY: _____		
F100 MODULE ASSEMBLY - AFTERMARKET NISSAN VERSA		
5/10 DRAWING NUMBER: _____		
TJ 319		

NOTE

1. CHANGE IN DESIGN, COMPOSITION, LOCATION OR PROCESSING FROM THE PART PREVIOUSLY APPROVED FOR PRODUCTION REQUIRES PRIOR APPROVAL BY TI AUTOMOTIVE.

- TO AUTOMOTIVE CONFIDENTIAL AND PROPRIETARY -
THIS DRAWING IS PROPERTY OF TO AUTOMOTIVE. TO AUTOMOTIVE
PROPRIETARY RIGHTS IN THE SUBJECT MATTER SHOWN AND DESCRIBED
HEREIN ARE RESERVED AND WILL REMAIN THE PROPERTY OF TO
AUTOMOTIVE. THE DRAWING IS PROVIDED FOR REFERENCE PURPOSES ONLY AND
EXPRESS CONDITION THAT IT WILL BE HELD IN CONFIDENCE. IT
SHALL NOT BE DISCLOSED TO OTHERS OR USED FOR THE PURPOSE
MANUFACTURE BY OR PROCUREMENT FROM OTHERS OF THE ARTICLE
SHOWN WITHOUT TO AUTOMOTIVE EXPRESS WRITTEN CONSENT. NO
RIGHT OR INTEREST IN THE SUBJECT OF THE DRAWING IS
TO BE RECEIVED. COPYRIGHT © TO AUTOMOTIVE 2010. ALL RIGHTS